

# Upholstery Options - c-line, e-line, s-plus & highliner

Cream part leather

option



Cream leather

option



Ivory part leather

option



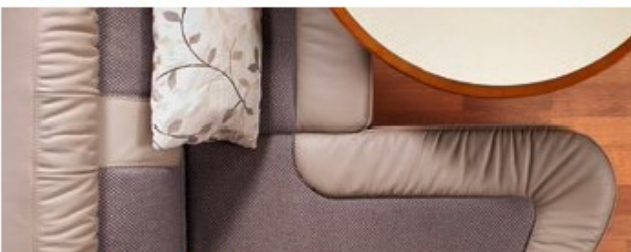
Ivory leather

option



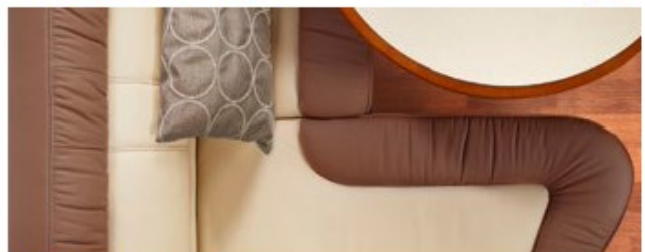
Macchiato part leather

option



Bicolour leather Marone

option



Savannah part leather

option



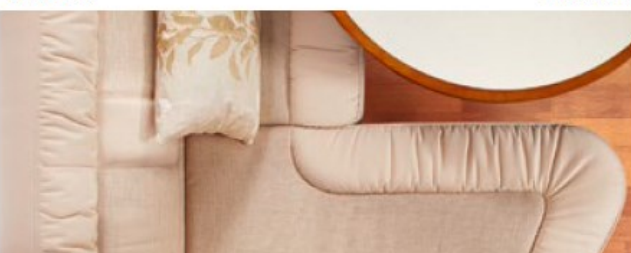
Bicolour leather Stone

option



Venezia

Standard



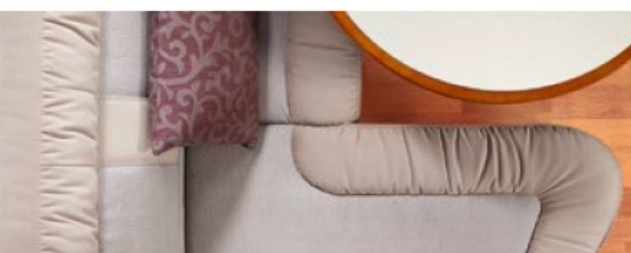
Malaga

Option (up to chic e-line)



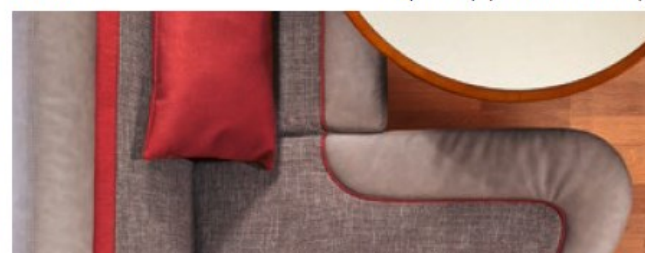
Toulouse

Standard



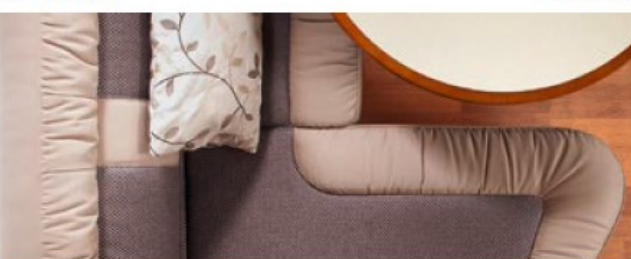
Ancona

Option (up to chic e-line)



Barcelona

Standard



→ World of Living model overview

Collection	Type	c-line	c-line I superior (Siena style world)	e-line / s-plus	e-line / s-plus edition (bright hatches)	highliner	highliner edition (bright hatches)
Venezia	Fabric	●	●	●	●	●	●
Barcelona	Fabric	●	●	●	●	●	●
Toulouse	Fabric	●	●	●	●	●	●
Malaga	Textile leather / fabric	○	○				
Ancona	Textile leather / fabric	○	○				
Macchiato	Part leather	○	○	○	○	○	○
Savannah	Part leather	○	○	○	○	○	○
Creme	Part leather	○		○	○	○	○
Ivory	Part leather		○				
Creme	Leather	○		○	○	○	○
Ivory	Leather		○				
Bicolour Stone	Leather	○	○	○	○	○	○
Bicolour Marone	Leather	○		○	○	○	○

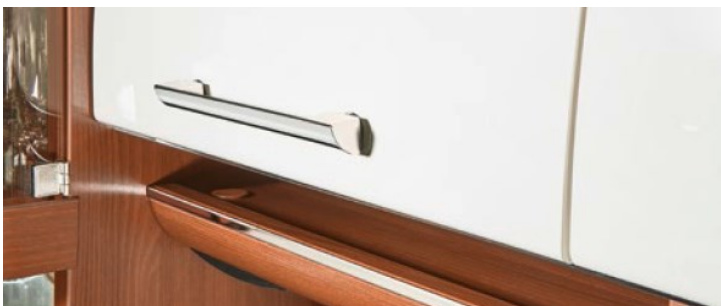
## Cabniteriy Options - c-line



Standard - "Turin" world of style, "Ergo" handle



Optional - "Mailand" world of style, "Ergo" handle



"superior" series—Interior line "Siena", handle strip "Ergo"

## Cabinetry Options - e- line, s-plus & highliner



Standard: "Summer chestnut" style world, "pull open" handles



Option: "High-gloss crème" style world, "pull open" handles